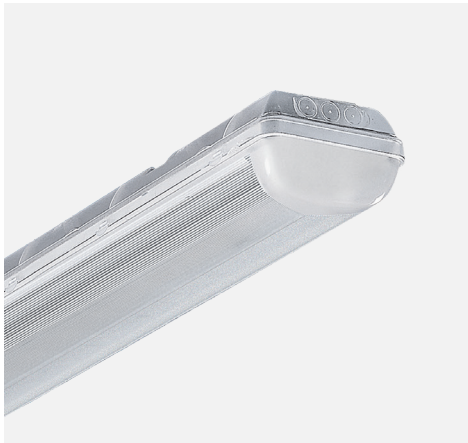
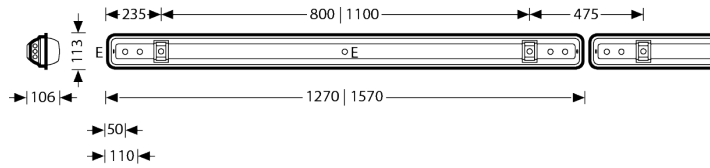


ARAGON

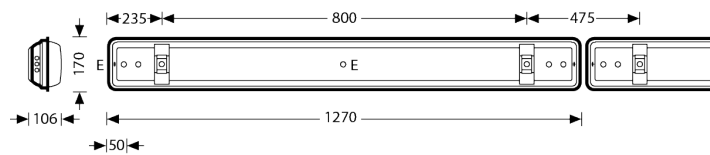
Basic Data Sheet



SINGLE



TWIN



TECHNICAL DATA

IP Rating	IP66
Safety class	I
Hot wire test	850°C
Impact resistance	IK08
Warranty	10 Years
L80 B10	> 50.000 hrs
CRI	Ra>80
Ambient Temp	up to +35°C

Optical system

Polycarbonate clear body and frosted PC diffuser. Dot free, uniform appearance. Diffuser manufactured from one piece, mechanically robust, with inner longitudinal prisms and finely structured end caps. Secure fixing of diffuser clip-in catches and screw fix for restricted access.

Luminaire body

Luminaire body of clear polycarbonate, flame resistant and recyclable. Ingress protection (IP66) and impact resistant (IK08). With knock-outs on ceiling side and ends for cable/conduit entry and through-wiring. Permissible ambient temperature (ta) -30°C - +35°C. Tested to AS/NZS 60598.1:2017

Electrical version

With electronic driver, 100,000 hour life. High power factor. High efficiency.

Emergency

Self - contained, maintained emergency models are available. Prices on request.

DESCRIPTION

Luminaire type

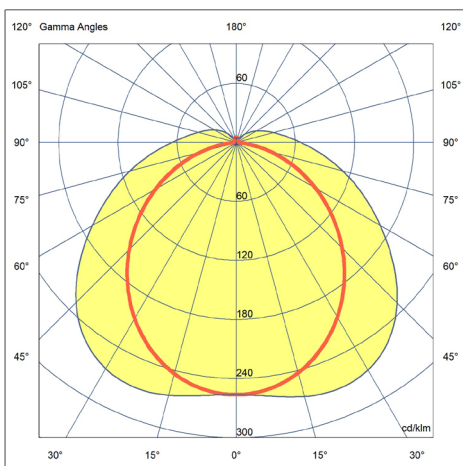
LED Surface-mounted luminaire, body and frosted diffuser, for damp environments and covered exterior areas.

Mounting types

Mounting with stainless steel fixing brackets (included). Suspended mounting possible using optional accessories.

Applications

Suitable for damp environments and covered exterior areas, car parks and stair wells.



LUMINAIRE SELECTION

ARAGON - [] - [] - [] - [] - [] - [] - []

LENGTH	WIDTH	PERFORMANCE	LUMENS	CCT	DRIVER	EMERGENCY (Optional)
1200	S - Single	B - Basic	Refer to Lumen Table	830	ET - Switchable	EMTNi - Emergency Tridonic maintained NiCd battery
1500				840	ETD - DALI	EMTLi - Emergency Tridonic maintained Lithium battery
					ETS - Motion sensor - ON/OFF	EMDTNi - Emergency Tridonic DALI maintained NiCd battery
1200	T - Twin				ETDS - Motion Sensor - DIM	EMDTLi - Emergency Tridonic DALI maintained Lithium battery

An example:

ARAGON - 1200 - S - B - 3250 - 840 - ETD - EMTNi

LUMEN TABLES

Type	Title	Output	Power	Efficacy
Single	Aragon Basic 1200	1630lm	12.8W	127.3lm/W
Single	Aragon Basic 1200	1950lm	15.3W	127.3lm/W
Single	Aragon Basic 1200	2600 m	20.4W	127.3lm/W
Single	Aragon Basic 1200	2930lm	23W	127.3lm/W
Single	Aragon Basic 1200	3250lm	25.5W	127.3lm/W
Single	Aragon Basic 1200	3580lm	28W	127.3lm/W
Single	Aragon Basic 1200	3900lm	30.6W	127.3lm/W
Single	Aragon Basic 1200	4230lm	33.2W	127.3lm/W
Single	Aragon Basic 1200	4560lm	35.8W	127.3lm/W

Type	Title	Output	Power	Efficacy
Single	Aragon Basic 1500	2035lm	16W	127.3lm/W
Single	Aragon Basic 1500	2435lm	19W	127.3lm/W
Single	Aragon Basic 1500	3250lm	25.5W	127.3lm/W
Single	Aragon Basic 1500	3660lm	29W	127.3lm/W
Single	Aragon Basic 1500	4060lm	32W	127.3lm/W
Single	Aragon Basic 1500	4470lm	35W	127.3lm/W
Single	Aragon Basic 1500	4875lm	38.3W	127.3lm/W
Single	Aragon Basic 1500	5280lm	41.5W	127.3lm/W
Single	Aragon Basic 1500	5690lm	44.7W	127.3lm/W

Type	Title	Output	Power	Efficacy
Twin	Aragon Basic 1200	4940lm	41.2W	120lm/W
Twin	Aragon Basic 1200	5260lm	44W	120lm/W
Twin	Aragon Basic 1200	5570lm	46.4W	120lm/W
Twin	Aragon Basic 1200	5860lm	48.8W	120lm/W
Twin	Aragon Basic 1200	6170lm	51.4W	120lm/W
Twin	Aragon Basic 1200	6800lm	56.7W	120lm/W
Twin	Aragon Basic 1200	7410lm	61.7W	120lm/W
Twin	Aragon Basic 1200	8040lm	67W	120lm/W
Twin	Aragon Basic 1200	8660lm	72.2W	120lm/W

NOTE - Custom options available