

DESCRIPTION

Richie Rail 20 is a unique illuminated handrail system with a diameter of 42.4mm. Hollow wall brackets conceal the power supply to the LED strip, and the low voltage input makes the handrail safe to touch. The innovative sliding wall brackets allow minimal power feeds to the LED strip for simple installation. Richie Rail 20 is suitable for use on residential and commercial stairs and thoroughfares including accessible routes and exterior urban spaces. Richie Rail 20 can be supplied as a “plug-and-play” modular system, or as a seamless, fully welded system.

FEATURES

- Made locally and factory assembled
- Unique illuminated handrail system
- Wall mounting bracket design for easy installation
- Polycarbonate diffuser - UV resistant
- Max. 20 W per metre

TECHNICAL DATA

APPLICATIONS	Commercial stairs, public stairs, accesible routes, exterior urban spaces
INSTALLATION	Interior Exterior (with IP65 LED strip)
MOUNTING	Wall mounted
MATERIALS	316 stainless steel rail and components Extruded aluminium Polycarbonate diffuser
POWER SUPPLY	24V DC - remote driver options ranging from 6 W up to 320 W
DIMMABLE	DALI, 1-10V, Phase Cut and Bluetooth drivers available
WARRANTY	7 year product warranty 13 months labour warranty. Refer to www.lightculture.com.au for more details
LIGHT SOURCE	LED ribbon strip
SDCM*	2-step MacAdam
CRI*	≥ 95
R9*	80+
SOURCE LIFE*	L80 B10=82 000 hrs
FINISH	Satin or polished 316 stainless steel

* Figures for the PRO Series LED Strips



LED STRIP

PRO Series IP20 & IP65

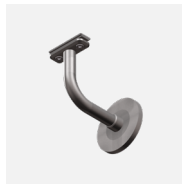
6 W/m			12 W/m			18 W/m			30 W/m - IP20 only		
2700 K	3000 K	4000 K	2700 K	3000 K	4000 K	2700 K	3000 K	4000 K	2700 K	3000 K	4000 K
171 lm	171 lm	184 lm	355 lm	355 lm	381 lm	-	-	-	-	-	--

RGBW IP20 & IP65

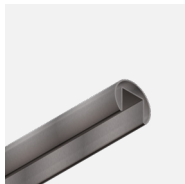
22 W/m			
RED	GREEN	BLUE	3000K
34 lm	91 lm	22 lm	132 lm

The above outputs are quoting luminaire output lumens per metre
 30 W/m strip only available in IP20.
 IP65 strips are +/- 200 K in colour temperature variance due to the silicone coating.
 Electrical and optical data variance +/- 10%

ACCESSORIES



WBRR-SS
Wall bracket



HR-RR20-SS
Handrail, 316 stainless steel



EX-RR20-MSA
Extrusion



EC-RR20-SS
Handrail end cap



JN-ST-RR20-SS
Straight joiner



JN-90-RR20-SS
90 degree joiner



JN-VD-RR20-SS
Variable joiner, down



JN-VU-RR20-SS
Variable joiner, up



JN-TUBE-20-SS
Joiner tube, for welded systems only



JN-90-RR20-W-SS
90 degree joiner tube, for welded systems only



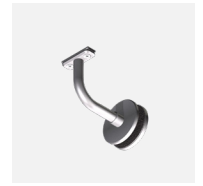
JN-180-RR20-W-SS
180 degree joiner tube, for welded systems only



EC-TUBE-20-SS
End cap for blank tube, for welded systems only



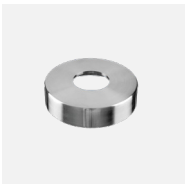
PTBRR-SS (satin finish) or
PTBRR-POL (polished finish)
Post top bracket



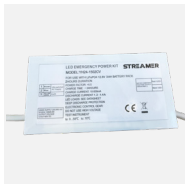
GMBRR-SS (satin finish)
Glass mount bracket



FF-RR20-SS
Surface mount flange for JN-TUBE-20-SS, post mount



FF-CC-20-SS (satin finish)
FF-CC-20-SS-POL (polished finish)
Surface mount flange cover cap for FF-RR20-SS



YH24-1502CV
Remote emergency pack (for use with XD Profiles Spec Series Emergency LED strips only)



SP-RR20-30-IP20 (IP20 version)
SP-RR20-30-IP66 (IP66 version)
0.5W 3000K asymmetric LED spot, IP20 or IP66

