

## DESCRIPTION

Richie Rail 26 is a unique illuminated handrail system with a diameter of 48.3mm. Hollow wall brackets conceal the power supply to the LED strip, and the low voltage input makes the handrail safe to touch. The innovative sliding wall brackets allow minimal power feeds to the LED strip for simple installation. Richie Rail 26 is suitable for use on residential and commercial stairs and thoroughfares including accessible routes and exterior urban spaces. Richie Rail 26 can be supplied as a “plug-and-play” modular system, or as a seamless, fully welded system.

## FEATURES

- Made locally and factory assembled
- Unique illuminated handrail system
- Wall mounting bracket design for easy installation
- Polycarbonate diffuser - UV resistant
- Max. 20 W per metre

## TECHNICAL DATA

|              |   |
|--------------|---|
| APPLICATIONS | Commercial stairs, public stairs, accessible routes, exterior urban spaces  |
| INSTALLATION | Interior   Exterior (with IP65 LED strip)   |
| MOUNTING     | Wall mounted  |
| MATERIALS    | 316 stainless steel rail and components   Extruded aluminium   Polycarbonate diffuser   |
| POWER SUPPLY | 24V DC - remote driver options ranging from 6 W up to 320 W   |
| DIMMABLE     | DALI, 1-10V, Phase Cut and Bluetooth drivers available  |
| WARRANTY     | 7 year product warranty   13 months labour warranty. Refer to <a href="http://www.lightculture.com.au">www.lightculture.com.au</a> for more details |
| LIGHT SOURCE | LED ribbon strip  |
| SDCM*        | 2-step MacAdam  |
| CRI*         | ≥ 95  |
| R9*          | 80+   |
| SOURCE LIFE* | L80 B10=82 000 hrs  |
| FINISH       | Satin or polished 316 stainless steel   |



\* Figures for the PRO Series LED Strips

## LED STRIP

### PRO Series IP20 & IP65

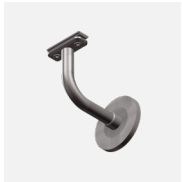
| 6 W/m  |        |        | 12 W/m |        |        | 18 W/m |        |        | 30 W/m - IP20 only |        |        |
|--------|--------|--------|--------|--------|--------|--------|--------|--------|--------------------|--------|--------|
| 2700 K | 3000 K | 4000 K | 2700 K | 3000 K | 4000 K | 2700 K | 3000 K | 4000 K | 2700 K             | 3000 K | 4000 K |
| 207 lm | 207 lm | 223 lm | 429 lm | 429 lm | 461 lm | -      | -      | -      | -                  | -      | -      |

### RGBW IP20 & IP65

| 22 W/m |        |       |        |
|--------|--------|-------|--------|
| RED    | GREEN  | BLUE  | 3000K  |
| 41 lm  | 110 lm | 27 lm | 160 lm |

The above outputs are quoting luminaire output lumens per metre  
 30 W/m strip only available in IP20.  
 IP65 strips are +/- 200 K in colour temperature variance due to the silicone coating.  
 Electrical and optical data variance +/- 10%

## ACCESSORIES



WBRR-SS  
Wall bracket



HR-RR26-SS  
Handrail, 316 stainless steel



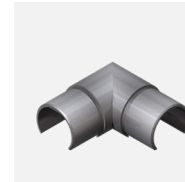
EX-RR26-MSA  
Extrusion



EC-RR26-SS  
Handrail end cap



JN-ST-RR2-SS  
Straight joiner



JN-90-RR26-SS  
90 degree joiner



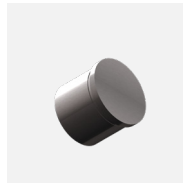
JN-VD-RR26-SS  
Variable joiner, down



JN-VU-RR26-SS  
Variable joiner, up



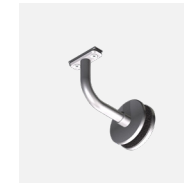
JN-TUBE-26-SS  
Joiner tube, for welded systems only



EC-TUBE-26-SS  
End cap for blank tube, for welded systems only



PTBRR-SS  
Post top bracket



GMBRR-SS  
Glass mount bracket



FF-RR26-SS  
Surface mount flange for JN-TUBE-26-SS, post mount



FF-CC-26-SS (satin finish) FF-CC-26-SS-POL (polished finish) Surface mount flange cover cap for FF-RR26-SS



YH24-1502CV  
Remote emergency pack (for use with XD Profiles Spec Series Emergency LED strips only)



SP-RR26-30-IP20 (IP20 version) SP-RR26-30-IP66 (IP66 version) 0.5W 3000K asymmetric LED spot, IP20 or IP66



