

NEON ARC

RGB CHASING | SILICONE

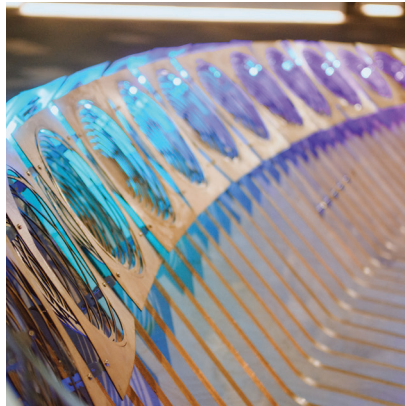
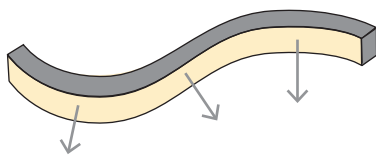


PHOTO CREDIT: VICTOR CARINGAL FROM ARUP

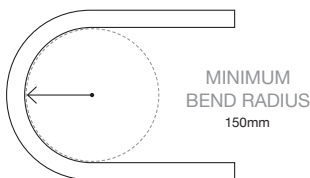
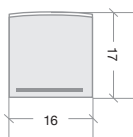
Neon Arc is a square W16 x H17mm, vertical bending model perfect for cove lighting, or architectural features in exterior and interior applications.

RGB (Red, Green, Blue) ribbon provides a rainbow of colour options from hot pinks to vivid blues and anywhere in-between. RGB Chasing gives you dynamic control, pixel segments are independently addressable allowing chasing & blending movement of colours. Requires controller.

Neon is made to order, check with our team for lead times.



LIGHT DIRECTION
VERTICAL BENDING



*STATIC VS DYNAMIC OPERATING

This product has a maximum wattage of 16.5W/m which is reached when all colours R+G+B are used simultaneously to create a white tone, with 3 x colour channels using approximately 5.5W/m each. Using Neon at this maximum load is called Static full loading

(all colour channels, all powered continuously).

When R, G or B channels are used individually or blended to make colour mixes eg blue or purple (excluding white tones) the wattage used is below the maximum load and is considered dynamic operating. This also applies when the colours are constantly

changing (including if a white tone is created but only used in a chasing, flashing or fading capacity).

When the maximum wattage of the product is reached, lengths longer than recommended may experience power loss, reduced luminosity & increased heat which can shorten the life of the product.

If unsure about the products intended usage, future proof by choosing the static full loading lengths.

APPLICATIONS

- Dynamic colour installations that chase, blend, flow, flash, skip, or fade
- Theatres, bars, restaurants, and retail
- Cove lighting
- Architectural features
- Exterior or interior installations
- Swimming or feature pools

FEATURES

- Neon Arc can be curved in the opposite direction of the other neon products
- UV & flame resistant

CODE	COLOUR	LUMENS
BL-LS-4800S-RGBC	R 615–625nm	≥90lm/m
	G 520–530nm	≥240lm/m
	B 465–475nm	≥40lm/m

ELECTRICAL & OPTICAL DATA VARIANCE +/- 10%. SOLD BY THE METRE. IES FILES AVAILABLE.

POWER & TEMP		PHYSICAL PARAMETERS & CONTROL	
LED WATTS	16.5W/m	MINIMUM BEND RADIUS	150mm
INPUT VOLTS	24V DC Constant voltage Onboard constant current	BEND DIRECTION	Vertical bending
OPERATING TEMP. (ENVIRONMENT)	-40°C ~ +45°C	DIMENSIONS	W16 x H17mm
MAX. RUN PER POWER FEED	Static full loading* 10m using one feed 20m using two feeds Dynamic operating* 15m using one feed 30m using two feeds	INGRESS PROTECTION	IP68 Protection established by use of connectors. <i>Dimensions of connectors shown on installation guide</i> SEE PAGE 2.
LIGHT & LIFE		CUTTING LENGTH	83.3mm
BEAM ANGLE	160°	HOUSING	UV & flame resistant white silicone with opal diffuser
LED PER METRE	84	MOUNTING	Profile / clips available SEE PAGE 3.
PIXELS PER METRE	12	CONTROL	Requires SPI controller or can be controller by DMX controller via SPI decoder.
SOURCE LIFE	50,000 hours		
WARRANTY	5 years		

NEON ARC | RGB CHASING | CONNECTIONS

Neon products are IP rated based on the fitted connections (power feed / end caps).

Bright Light recommend using Slimline injection moulding for the best result, a clean finish and IP68 rating. These are fitted at factory during the production process and can not be altered once produced - **ensure all lengths are double-checked before ordering.**

Power feed connectors are priced & supplied with 1metre cable as standard. Please specific at time of quoting if alternate lengths are required.

SLIMLINE INJECTION MOULDING CONNECTIONS | IP68

RECOMMENDED



REQUIRES FITTING AT FACTORY.

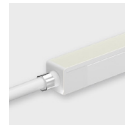
EXACT LENGTH REQUIRED BEFORE PRODUCTION



SIDE FEED



BOTTOM FEED



TOP END FEED



END CAP

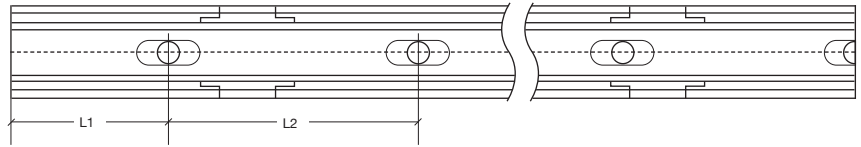


300MM FLEXIBLE
CONNECTOR

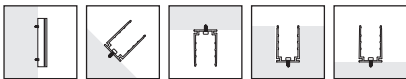
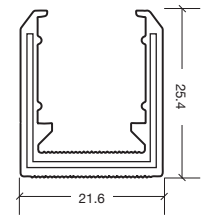
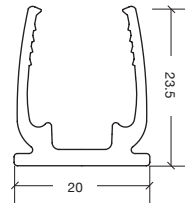
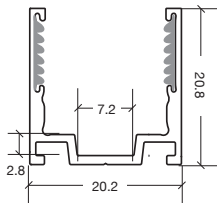


T FEED

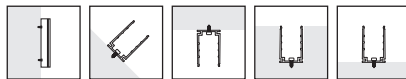
NEON ARC | MOUNTING ACCESSORIES



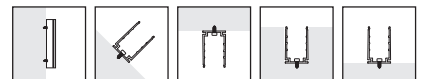
CODE	ACCESSORY	L1	L2	HOLE DIMENSIONS	HOLE NUMBER
BL-LS-4815	SERRATED ALUMINIUM PROFILE 1M	100mm	200mm	4 × 10mm	5
BL-LS-4816	SERRATED ALUMINIUM PROFILE 2M	100mm	200mm	4 × 10mm	10
BL-LS-4817	SERRATED ALUMINIUM CLIP 20MM	10mm	-	4 × 10mm	1
BL-LS-4818	THICKENED PLASTIC CLIP 35MM	17.5mm	-	4.5 × 8mm	1
BL-LS-4819	THICKENED PLASTIC PROFILE 1 METRE	100mm	200mm	4.5 × 8mm	5
BL-LS-4820	THICKENED PLASTIC PROFILE 2 METRE	100mm	200mm	4.5 × 8mm	10
BL-LS-4821W	ANOLE BENDABLE PROFILE WHITE 1 METRE	100mm	200mm	3mm	5
BL-LS-4821B	ANOLE BENDABLE PROFILE BLACK 1 METRE	100mm	200mm	3mm	5



SERRATED ALUMINIUM
PROFILE & MOUNTING CLIP



THICKENED PLASTIC
PROFILE & CLIP



ANOLE BENDABLE PROFILE