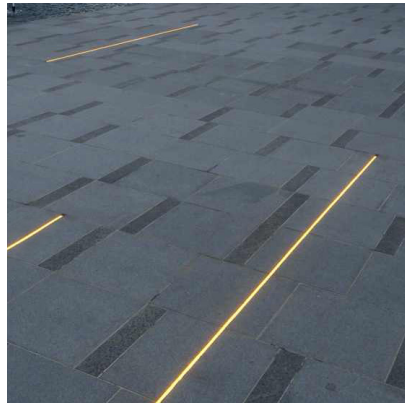
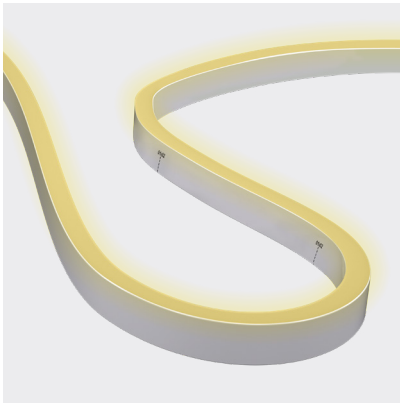


# NEON EDGE

TUNEABLE WHITE | SILICONE



## APPLICATIONS

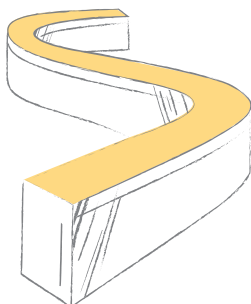
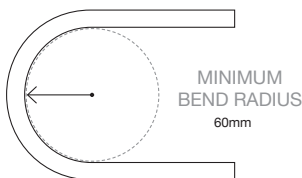
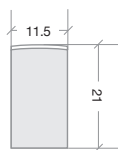
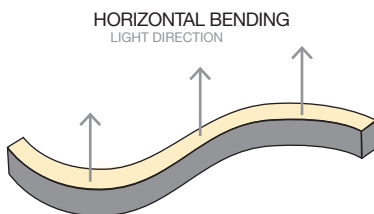
- Ideal for applications where colour temperature adjustment is required
- Cove lighting, handrails, or toe kicks
- Architectural features
- Exterior or interior installations
- Swimming or feature pools

Neon is a broad range of silicone encapsulated LED ribbons with a variety of light emissions and casings that closely reference glass neon tube.

Neon Edge is a sleek W11.5 x H21mm model.

Tuneable White lighting can be adjusted to suit the environment and time of day. Warmer temperatures create a cosy feel that is perfect for evenings, while cooler temperatures simulate day light, creating a more alert feel.

Neon is made to order, check with our team for lead times.



CODE	COLOUR	LUMENS
BL-LS-4400S	WARM WHITE 2200K +/- 120K	≥140lm/m
	COOL WHITE 5700K +/- 285K	≥170lm/m

ELECTRICAL & OPTICAL DATA VARIANCE +/- 10%. SOLD BY THE METRE. IES FILES AVAILABLE.

## POWER & TEMP

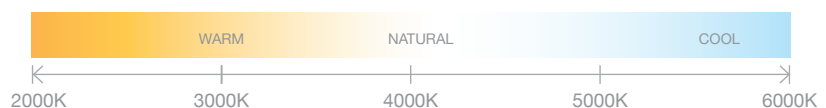
LED WATTS	12W/m
INPUT VOLTS	24V DC Constant voltage
OPERATING TEMP. (ENVIRONMENT)	-40°C ~ +55°C
MAX. RUN PER POWER FEED	15m using one feed 30m using two feeds

## LIGHT & LIFE

CRI	≥80
BEAM ANGLE	160°
LED PER METRE	144
SOURCE LIFE	50,000 hours
WARRANTY	5 years

## PHYSICAL PARAMETERS & CONTROL

MINIMUM BEND RADIUS	60mm
BEND DIRECTION	Horizontal bending
DIMENSIONS	W11.5 x H21mm
INGRESS PROTECTION	IP67 or IP68 Protection established by use of connectors. <i>Dimensions of connectors shown on installation guide</i> SEE PAGE 2.
CUTTING LENGTH	83.3mm
HOUSING	UV & flame resistant white silicone with opal diffuser
MOUNTING	Profile / clips available SEE PAGE 3.
CONTROL	Requires 2-channel controller



## NEON EDGE | TUNEABLE WHITE | CONNECTIONS

Neon products are IP rated based on the fitted connections (power feed / end caps).

Bright Light recommend using Slimline injection moulding for the best result, a clean finish and IP68 rating. These are fitted at factory during the production process and can not be altered once produced - **ensure all lengths are double-checked before ordering.**

If on-site cutting is required (due to lengths being unknown in advance or site design alterations), Snap connector fittings can be used instead. Snap Connectors can be fitted on-site and offer an IP67 rating (provided all installation instructions are followed correctly).

Power feed connectors are priced & supplied with 1metre cable as standard. Please specific at time of quoting if alternate lengths are required.

### SLIMLINE INJECTION MOULDING CONNECTIONS | IP68

RECOMMENDED



REQUIRES FITTING AT FACTORY.  
EXACT LENGTH REQUIRED BEFORE PRODUCTION



SIDE FEED



BOTTOM FEED



TOP END FEED



END CAP



300MM FLEXIBLE  
CONNECTOR



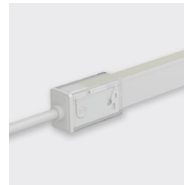
T FEED

### SNAP CONNECTIONS | IP67

ON-SITE FITTING



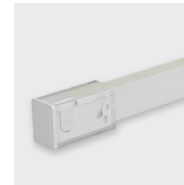
FITTING ON-SITE - WHERE LENGTHS ARE UNKNOWN IN ADVANCE.  
MUST BE FITTED CORRECTLY FOR IP RATING



TOP END FEED

01

02



END CAP

01

02



300MM FLEXIBLE  
CONNECTOR

TUNEABLE WHITE

BL-LS-4017

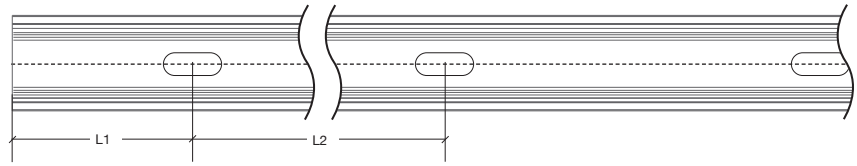
BL-LS-4018

BL-LS-4026

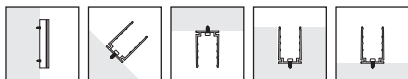
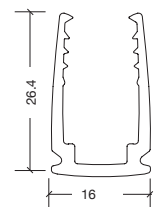
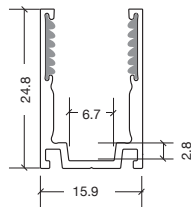
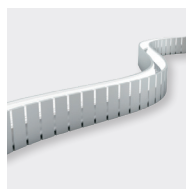
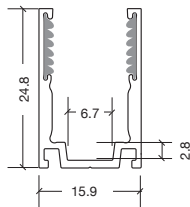
BL-LS-4027

BL-LS-4019

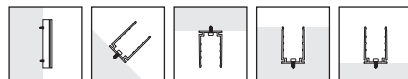
NEON EDGE | MOUNTING ACCESSORIES



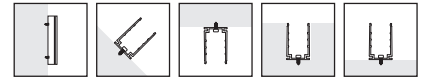
CODE	ACCESSORY	L1	L2	HOLE DIMENSIONS	HOLE NUMBER
BL-LS-4082	SERRATED ALUMINIUM CLIP 20MM	10mm	-	4 × 10mm	1
BL-LS-4080	SERRATED ALUMINIUM PROFILE 1 METRE	100mm	200mm	4 × 10mm	5
BL-LS-4081	SERRATED ALUMINIUM PROFILE 2 METRES	100mm	200mm	4 × 10mm	10
BL-LS-4083	BENDABLE SERRATED ALUMINIUM PROFILE 1000MM	116.5mm	98.8mm	Ø4.2mm	10
BL-LS-4084	THICKENED PLASTIC CLIP 35MM	17.5mm	-	4.5 × 8mm	1
BL-LS-4085	THICKENED PLASTIC PROFILE 1 METRE	100mm	200mm	4.5 × 8mm	5
BL-LS-4086	THICKENED PLASTIC PROFILE 2 METRE	100mm	200mm	4.5 × 8mm	10



SERRATED ALUMINIUM  
PROFILE 2M & MOUNTING CLIP



BENDABLE SERRATED  
ALUMINIUM PROFILE 1M



THICKENED PLASTIC  
PROFILE & CLIP